

THE FUTURE WE BUILD



(Value housing initiative of Ashadeep Group)





THE Z W T Z O O

- 01 Promoter's Message
- 02 CEO's Message
- 03 Vision
- 04 Mission & Values
- 05 Philosophy
- 06 The Team
- 07 Why Reverence?
- 08 Facts & Figures
- 09 Our Presence
- 10 Group Financial
- 11 Group Projects
- 12 Life at our Project
- 13 Maintenance at our Projects
- 14 Corporate Social Responsibility
- 15 Awards & Accolades

Inclusive growth, rooted in Rajasthan,
spreading dignity and hope through Affordable,
thoughtfully-integrated spaces.

When we laid the first brick more than two decades ago, we were not chasing scale. We were chasing purpose - to give every family a chance at dignity, stability, and a place they could call their own. Today, that purpose has only deepened.

The Group was built on a belief: that housing is not just about cement and concrete, but about care and commitment. Whether it's our woman co-ownership initiative, our focus on tier-3 cities, or our transparent dealings – everything we do is centered on people.

Our cities are growing, and so are the aspirations of everyday Indians. We are here to serve those aspirations with integrity. From timely deliveries to sustainable communities, from in-house construction to affordable maintenance – we promise more than homes. We promise a better way to live.

We thank every family who trusted us, every partner who believed in our model and every team member who helped turn blueprints into belonging.

There's still much to do.
And together, we will build it
- one home, one smile,
one story at a time.

Warm regards,
Anil Kumar Gupta
Promoter
Reverence Value Homes





Turning aspirations
into accessible realities
for every family.

Warm regards,
Mr. Ananya Agarwal
CEO - Reverence Value Homes

CEO

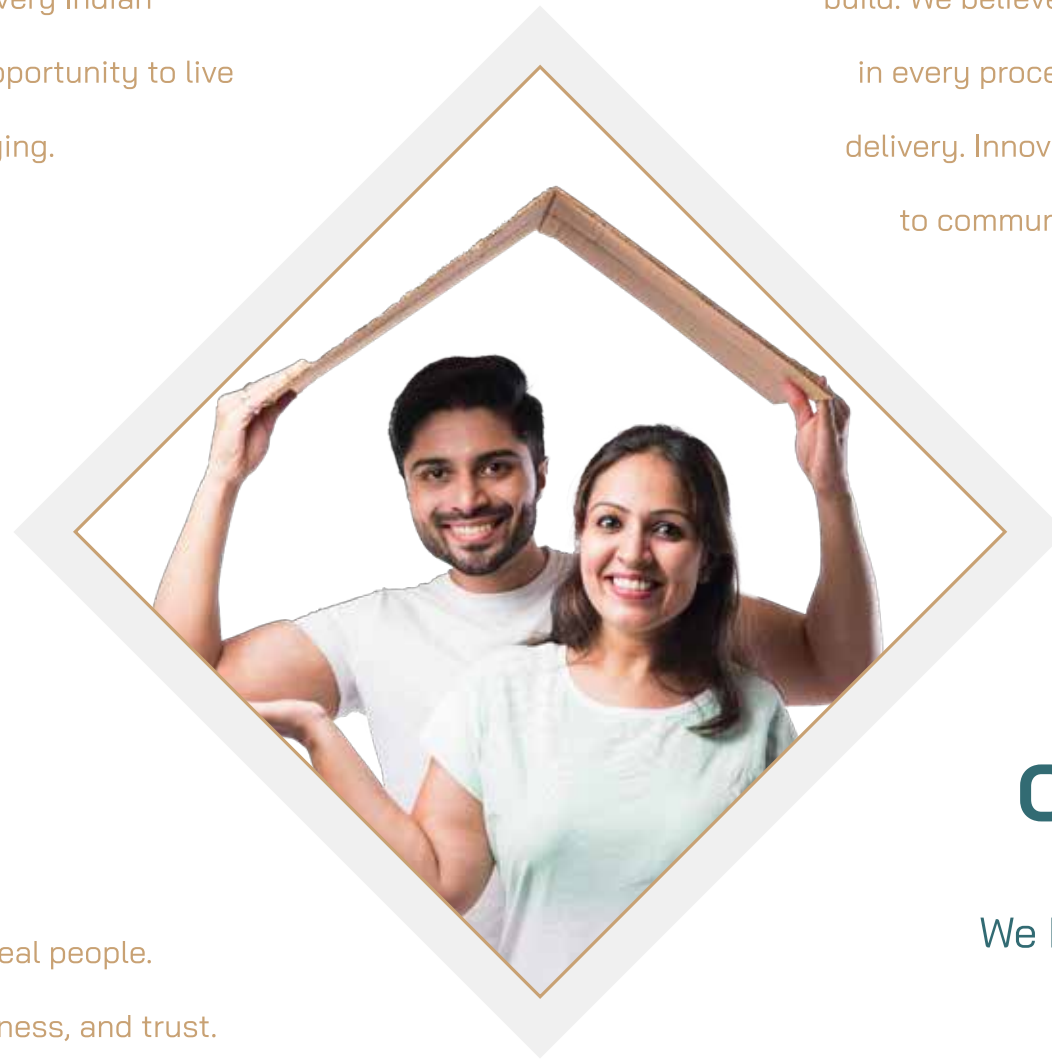
With over five years of experience in the affordable housing sector, I have seen firsthand how real estate, when built with purpose, can reshape lives. At The Group, I carry forward this mission - to not just build homes, but to build trust, dignity, and communities that thrive. My journey from London Business School to leading one of Rajasthan's most respected housing movements has taught me one simple truth: real estate is at its best when it is value-driven. Global exposure has given me perspective, but it is the people of our towns and cities that keep me grounded.

For me, the promise of Reverence lies in bridging aspiration with accessibility. Our commitment to affordable housing means we continue to innovate - from design to financing - so that more families can step into a home they truly deserve.

Together with our team, partners, and communities, I look forward to writing the next chapter of Reverence - one where growth is not just measured in square feet, but in opportunities created, futures secured, and lives uplifted.

OUR VISION

Our vision is to make quality housing truly accessible, inclusive, and empowering - ensuring that every Indian family, regardless of background, has the opportunity to live with dignity, security, and a sense of belonging.



OUR MISSION

To build affordable, high-quality homes for real people.
To deliver projects with transparency, timeliness, and trust.
To uplift tier-2 and tier-3 cities through integrated townships.
To promote women empowerment through co-ownership in housing. To maintain full control through in-house construction, rental and maintenance.

OUR VALUES

At The Group, our values are the foundation of everything we build. We believe in quality without compromise, transparency in every process and trust that's earned through consistent delivery. Innovation drives us forward, while our commitment to community and sustainable growth ensures we create spaces that stand the test of time.

OUR PHILOSOPHY

We believe in doing things differently not to stand out, but to stay true.

We build for users, not investors. We make women co-owners, because homes must empower. We collaborate with global brands to enrich small-town lifestyles. We stay in-house — from construction to maintenance, so every promise is our own.

The one who build what matters

Behind our every project there is a team of dreamers and doers. Engineers from top institutions, finance experts, retired RAS officers and young professionals – all working with a shared mission to build spaces that matter.

We honor every hand that lifts a brick, and every mind that ensures we lift lives.



Mr. Vineet Agarwal- Director

A Civil Engineering graduate from MNIT Jaipur, he brings 33 years of expertise in infrastructure development and building construction. As the Infra Director of the company, he leads with technical precision and executional excellence.



Mr. Basudeo Sharma - Director (Legal Operations)

A retired R.A.S. officer from the Government of Rajasthan, he brings 45 years of rich experience in administrative affairs, contributing seasoned governance and strategic insight to the organization.



Mr. Alok Gupta- Director

An IIM Bangalore alumnus with 30 years of expertise in infrastructure and business development, he has a proven track record at Reliance Industries, IL&FS, Ramboll, and PWD. He now serves as Director - Marketing & Operations, leading growth and strategic outreach.



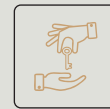
Mrs. Anisha Agarwal- Director

A qualified Chartered Accountant (ICAI) and Chartered Financial Analyst (CFA, USA), she brings over 5 years of experience in the affordable housing sector. Her financial expertise and domain knowledge add strong analytical depth to the organization's growth initiatives.

WHY US?



Your trusted Real Estate Development Partner



TURNKEY SOLUTIONS

Complete real estate project management from inception until delivery



INTEGRATED SERVICES

One-stop solution covering planning, approvals, construction, handover and maintenance under unified management



SUSTAINABILITY COMMITMENT

Green building practices with water recycling, energy efficiency, and eco-friendly construction for environmental responsibility



SUPERIOR QUALITY STANDARDS

Third-party quality audits ensuring exceptional construction quality



ON-TIME DELIVERY

Proven track record for timely project completion



LIFETIME SUPPORT

Dedicated customer service team providing comprehensive post-construction assistance and maintenance support

IMPACT IN NUMBERS

We measure success not just in square feet, but in smiles and stories

23

Years of Trusted Presence Since 2002

46

Projects in Rajasthan

8,500+

Happy Families

130 Lacs+

sq. ft. Housing & Commercial Construction

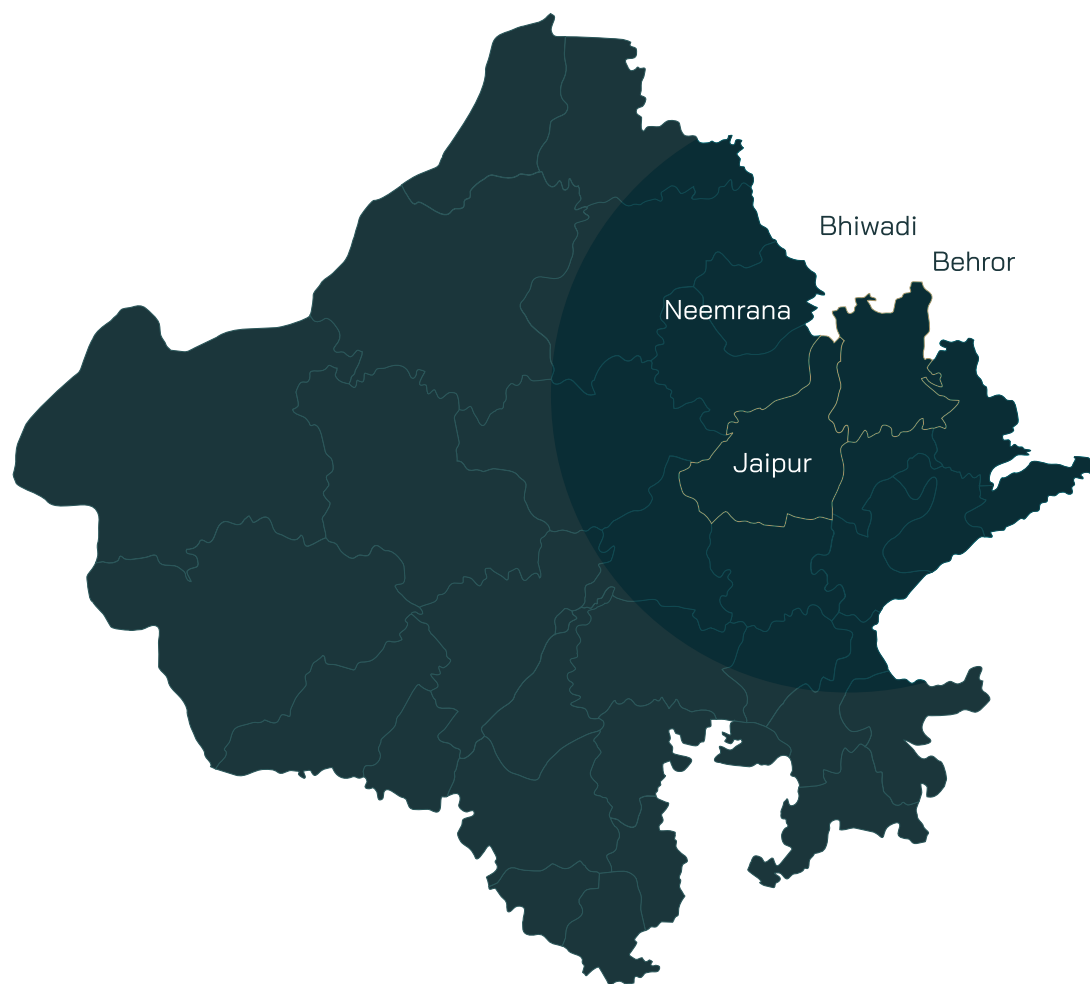
6,96,925

Sq. M. of plotted development

Each number represents a home lit up, a child safely growing, a life upgraded.

Our Landmark Presence In

Rajasthan



Jaipur

The World Street

Vedanta Phase I

Vedanta Phase II

Green Avenue

Rainbow

King's Court

Rudraksha I

Rudraksha II

Revanta

Aarvi Heights

Behror

Upvan the Garden City

Neemrana

Green Acres

Shubhgrah

Bhiwadi

Ananta Jagat Phase I

Ananta Jagat Villa

Building Landmarks, **Shaping Skylines**

From Jaipur to Behror to Neemrana and Bhiwadi, we redefined the way Rajasthan lives, works, and grows. Each project stands as a testimony to our vision - blending innovation, design and trust.

Group Financials

GROUP NET WORTH (IN CR)

	2018-19	2019-20	2020-21	2021-22	2022-23	2023-24	2024-25 (Prov)
Renaissance Buildhome Pvt Ltd	62.06	63.71	65.89	70.38	67.69	65.21	68.21
Regalia Builders	13.99	22.54	30.69	34.97	30.43	14.51	17.51
Reverence Infrastructure India LLP	1.60	4.56	17.83	40.35	67.52	74.29	93.81
Regalia Buildwell Pvt Ltd	4.99	5.93	6.02	5.97	5.63	6.86	6.89
Total	82.64	96.74	120.43	151.67	171.27	160.87	186.42

GROUP TURNOVER (IN CR)

	2018-19	2019-20	2020-21	2021-22	2022-23	2023-24	2024-25 (Prov)
Renaissance Buildhome Pvt Ltd	53.04	51.89	42.43	38.08	15.58	13.30	40.05
Regalia Builders	-	30.57	12.97	17.60	13.84	48.07	32.25
Reverence Infrastructure India LLP	14.69	33.65	39.65	75.02	86.88	39.28	72
Regalia Buildwell Pvt Ltd	-	1.97	1.49	0.33	0.51	0.13	0.0
Total	67.73	118.08	96.54	131.03	116.81	100.78	144.03

Group Projects

Completion Year/ Expected	Project Name and Location	Multi-storeyed Floors	Type of Development	No of Units	Built up Area (Sqft)
2028	The World Street, Jaipur	G+8	Commercial Complex	276	11,00,000
2019	Vedanta (Ph-1), Jaipur	G+12	Apartments	269	5,92,000
2028	Vedanta (Ph-2), Jaipur	G+6/G+12	Apartments	318	7,25,000
2011	Green Avenue, Jaipur	G+9	Apartments	242	4,00,000
2019	Rainbow, Jaipur	G+1/G+12	Township	576	3,85,000
2018	King's Court, Jaipur	G+1	Township	116	2,00,000
2021	Rudraksh - I & II, Jaipur	G+4	Apartments	777	4,28,000
2018	Revanta, Jaipur	G+11	Apartments	22	55,000
2024	Aarvi Height	G+9	Apartments	16	51,000
2017	Ananta Jagat (Ph-1), Bhiwadi	G+14	Apartments	306	4,15,000
2025	Ananta Jagat Villa, Bhiwadi	G+1	Township	40	1,30,000
2023	Upvan, Behror	G+1/G+2/G+4	Township	2536	18,73,184
2023	Shubhgrah, Neemrana	G+4	Apartments	778	4,25,000
2019	Green Acres, Neemrana	G+1/G+2/G+6/G+9	Township	1140	13,50,621

IN THE MAKING

The World Street

Ready for you in 2028





The World Street is Rajasthan's first ever development to introduce SCO (Shop cum Office) spaces, crafted by The Group in Jagatpura, Jaipur. With retail showrooms, office spaces, a rooftop club, and a central food court, set along 4 side road access, it redefines business and leisure in one vibrant destination.

BUILT UP AREA - 11,00,000SQ.FT.

Configuration	Size (BUA in Sq.Ft.)	Units
SCO	25184.32 - 25455.46	16
Offices	902.88 - 1063.16	230
Showrooms	1698.34 - 3896.14	30

G+8
Floors

276
Units

5.43 Acres
(Approx)

Land Area

- Rooftop Restaurant
- Private Club
- AC Entrance Lobby
- High Speed Elevators
- Food Court
- Double Basement Parking
- Amenities

The World Street,
Jaipur

BUILT & DELIVERED

Vedanta (Phase-I), Jaipur

Completed in 2019





Vedanta (Phase-I) is a high-rise residential project located in Jagatpura, Jaipur. Offering thoughtfully designed 2, 3 & 4 BHK apartments with modern amenities, it delivers a refined living experience in one of the city's most rapidly developing corridors.

BUILT UP AREA - 5,92,000SQ.FT

Configuration	Size (BUA in Sq.Ft.)	Units
2 BHK	754-1064	127
3 BHK	1408-1706	116
4 BHK	2110	26

G+12
Floors

269
Units

3.47 Acres
(Approx)

Land Area

Multi-Purpose Hall
Modern Clubhouse
Kids play area
Amenities

Vedanta
(Phase-I),
Jaipur

IN THE MAKING

Vedanta (Phase-II), Jaipur

Units 102, Ready in 2025

Units 216 to be ready in 2028





Vedanta Phase II is a premium high-rise residential project located in Jagatpura, Jaipur.

Building on the success of Phase I, it offers thoughtfully designed 3 and 4 BHK apartments with modern amenities, serene green spaces and excellent connectivity for an elevated urban lifestyle.

BUILT UP AREA - 7,25,000SQ.FT

Configuration	Size (BUA in Sq.Ft.)	Units
3 BHK	1226-1764	294
4 BHK	2325	24

G+6,12
Floors

318
Units

4.59 Acres
(Approx)

Land Area

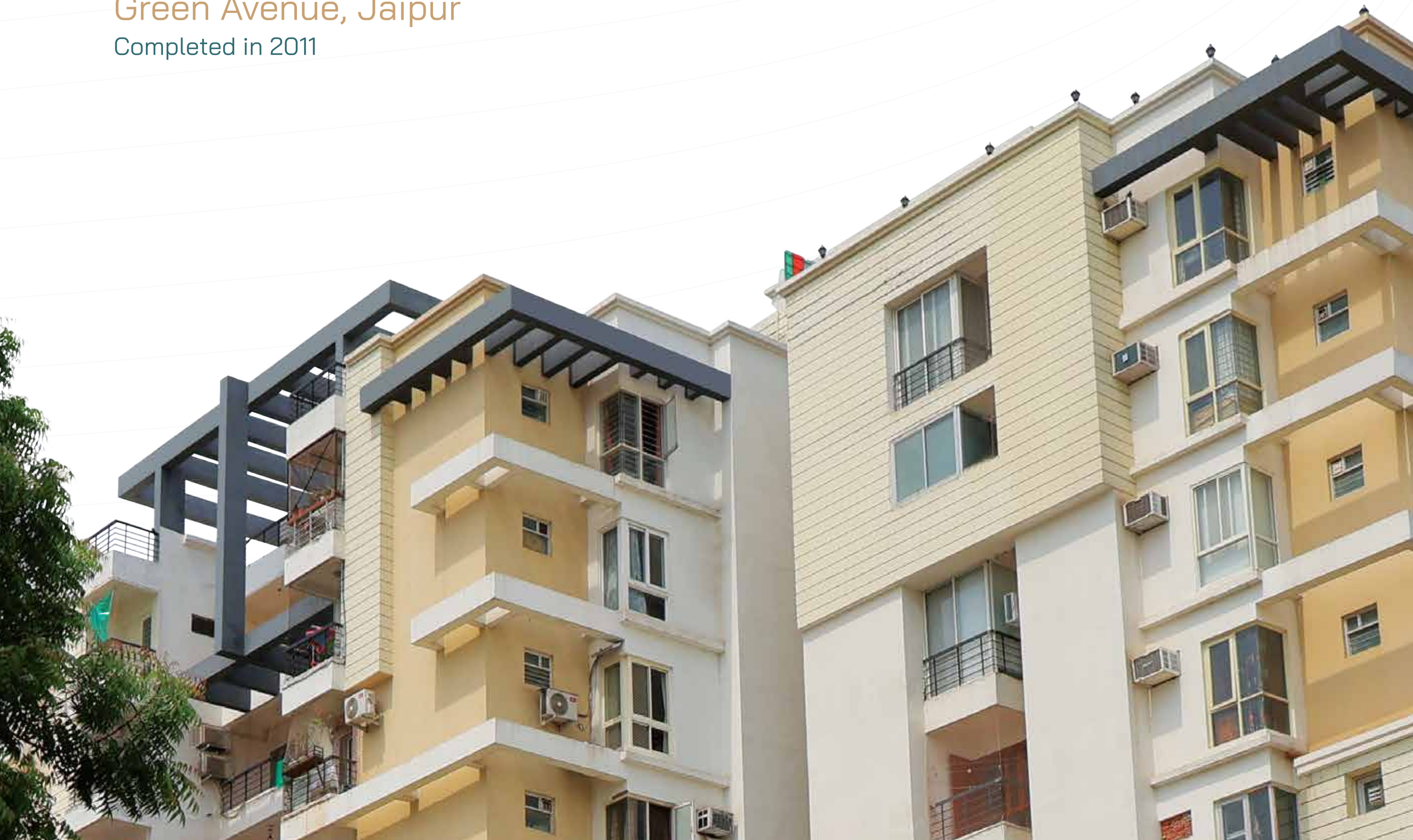
Multi-Purpose Hall
Modern Clubhouse
Kids play area
Amenities

Vedanta
(Phase-II), Jaipur

BUILT & DELIVERED

Green Avenue, Jaipur

Completed in 2011





Green Avenue stands as a testament to Group's commitment for quality living.

Located in Jaipur, this residential development combines modern architecture with thoughtful planning, offering a well-balanced lifestyle in a vibrant urban setting.

BUILT UP AREA - 4,00,000 SQ.FT.

Configuration	Size (BUA in Sq.Ft.)	Units
2 BHK	999.34	54
3 BHK	1196.86-1392.66	188

G+9
Floors

242
Units

3.35 Acres
(Approx)

Land Area

Modern Clubhouse

Kids play area

Built-up Area

Green Avenue,
Jaipur

BUILT & DELIVERED

Rainbow, Jaipur

Completed in 2022





Rainbow is a well-planned residential township in Jagatpura, Jaipur, offering a mix of studio, 2, 3 BHK apartments and villas. With modern amenities and a strategic location near key institutions and hospitals, it promises a vibrant and convenient lifestyle for families and professionals alike.

BUILT UP AREA - 3,85,000 SQ.FT.

Configuration	Size (BUA in Sq.Ft.)	Units
Studio	286.00	192
2 BHK	645.00 - 791.90	204
3 BHK	970.80	60
Villas	645	120

G+12 & G+1
Floors

576
Units

5.97 Acres
(Approx)

Land Area

Modern Clubhouse
Multipurpose Hall
Kids' Play Area

Amenities

Rainbow,
Jaipur

BUILT & DELIVERED

King's Court, Jaipur

Completed in 2019





King's Court is a independent residential enclave offering a blend of privacy, space, and functionality. Nestled in a calm neighborhood of Jaipur, the project is designed for families seeking a peaceful lifestyle with the assurance of quality construction and thoughtful planning.

BUILT UP AREA - 2,00,000 SQ.FT.

Configuration	Size (BUA in Sq.Ft.)	Units
Villas	1632-2029	116

G+1
Floors

116
Units

4.6 Acres
(Approx)

Land Area

- Modern Clubhouse
- Kids' Play Area
- CCTV Surveillance
- Centrally located garden

Amenities

King's Court,
Jaipur

BUILT & DELIVERED

Rudraksh, Jaipur

Completed in 2021





Rudraksh-I & II is a mid-rise residential project in the heart of Jaipur, offering affordable housing and comfortable living within a community-focused environment.

BUILT UP AREA - 4,28,000 SQ.FT.

Configuration	Size (BUA in Sq.Ft.)	Units
2 BHK (EWS)	442-445	175
2 BHK (LIG)	578-581	602

G+4, G+5
Floors

777
Units

5.1 Acres
(Approx)

Land Area

Rudraksh,
Jaipur

BUILT & DELIVERED

Revanta, Jaipur

Completed in 2017

Revanta



Revanta is a boutique residential project that exemplifies exclusivity and elegance. With limited units designed for privacy and comfort, it offers a serene living experience in Jaipur, tailored for those who value refined spaces and a peaceful environment.

BUILT UP AREA - 55,000 SQ.FT.

Configuration	Size (BUA in Sq.Ft.)	Units
3 BHK	1998.61-2085.18	22

G+11
Floors

22
Units

1333.33
Sq.Yd.
(Approx)

Land Area

Community Hall
Gymnasium

Amenities

Revanta,
Jaipur

BUILT & DELIVERED

Aarvi Height, Jaipur

Completed in 2024





Aarvi Height is a premium luxury apartment project by the Group, located in the prime locality of Gandhinagar, Jaipur.

With limited units and a focus on privacy, it offers a peaceful residential experience close to key urban conveniences and transit hubs.

BUILT UP AREA - 51,000 SQ.FT.

Configuration	Size (BUA in Sq.Ft.)	Units
3 BHK	1977	14
4 BHK	3962	02

G+9
Floors

16
Units

1333.33
Sq.Yd.
(Approx)

Land Area

Community Hall
Planned Reception

Amenities

Aarvi Height,
Jaipur



JAIPUR PLOTTING

Project Name	Status	Possession Year	No. of Units	Land Area
ASHADEEP ENCLAVE A & B	Delivered	2005	88	11.95 Acres (Approx.)
ASHADEEP SHREEPURAM	Delivered	2006	293	25.06 Acres (Approx.)
Ashadeep Residency	Delivered	2009	93	7.43 Acres (Approx.)
ASHADEEP GREENS	Delivered	2015	293	28.57 Acres (Approx.)
ASHADEEP GREENS EXTENSION	Delivered	2015	211	11.07 Acres (Approx.)
ASHADEEP VASANT KUNJ	Delivered	2015	674	56.30 Acres (Approx.)
ASHADEEP GREEN VALLEY	Delivered	2023	85	3.42 Acres (Approx.)
ASHADEEP GREEN VALLEY EXTENSION	Delivered	2024	94	4.69 Acres (Approx.)
ASHADEEP GREEN VATIKA	Delivered	2024	97	3.63 Acres (Approx.)
ASHADEEP Vasant Kunj Extension	Delivered	2024	104	6.24 Acres (Approx.)
ASHADEEP KAILASH VATIKA	Under Construction	2027	92	4.72 Acres (Approx.)

BUILT & DELIVERED

Upvan
The Garden City,
Behror
Completed in 2023





CHANDAN VILLA

Configuration	Size (BUA in Sq.Ft.)	Units
3 BHK	811.17-1337.95	237



KESAR

Configuration	Size (BUA in Sq.Ft.)	Units
2 BHK (EWS)	356.93	60
2 BHK (LIG)	683.94-720.10	126

Upvan The Garden City is a sprawling integrated township by The Group in Behror, offering a mix of villas, independent floors, apartments & Shops. Designed for holistic living, the project blends open green spaces with essential amenities, catering to both end-users and investors in the fast-growing Delhi–Jaipur industrial belt.



KADAMB

Configuration	Size (BUA in Sq.Ft.)	Units
SHOPS	171.36-3715.33	37

UPVAN PLOTS

Configuration	Size	Units
Plots	200 Sq.Yd.	36

G+1, G+2
Floors

496
Units

28.51 Acres
(Approx)

Land Area

Modern Clubhouse
Kids play area

Amenities

Upvan
The Garden City
Behror

BUILT & DELIVERED

Upvan
The Garden City,
Behror

Completed in 2023





Upvan - The Garden City, Behror is a large-scale affordable housing development in Behror with low-rise residences, EWS/LIG apartments, landscaped greens, wide roads, and a clubhouse enhanced by brand collaborations for an "Affordable Homes – Premium Experience."

TULSI

Configuration	Size (BUA in Sq.Ft.)	Units
1 BHK (EWS)	327.22	450
2 BHK (LIG)	550.36	1590

G+4
Floors

2040
Units

28.51 Acres
(Approx)
Land Area

Modern Clubhouse
Community Hall
Kids play area
Amenities

Upvan -
The Garden City,
Behror

BUILT & DELIVERED

Shubhgrah, Neemrana

Completed in 2023





Shubhgrah is a thoughtfully developed residential project by The Group in Neemrana, offering affordable apartments within a secure, gated community. Designed for comfort and convenience, it provides living spaces amidst the growing industrial and investment hub of Neemrana.

BUILT UP AREA - 4,25,000 SQ.FT.

Configuration	Size (SBUA in Sq.Ft.)	Units
2 BHK (EWS)	433-449.17	276
2 BHK (LIG)	558-576.40	470
SHOPS	110.32-384.59 (BUA)	30

G+4
Floors

776
Units

4.91 Acres
(Approx)

Land Area

Shubhgrah,
Neemrana

BUILT & DELIVERED

Green Acres, Neemrana

Completed in 2019



Lavender

Tulip

Marigold
G+2 Floors

Ashadeep Royal Club

The Palm

Green-
The Villas

Green-
The Villas

Gulmohar-
Walk-up Apartments

Gulmohar Elite

Entry Gate

Marketing Office



Green Acres is a sprawling integrated township by the Group in Neemrana, offering a mix of villas, independent floors, and apartments. Designed for holistic living, the project blends open green spaces with essential amenities, catering to both end-users and investors in the fast-growing Delhi–Jaipur industrial belt.

BUILT UP AREA-13,50,621 SQ.FT.

Configuration	Size (BUA in Sq.Ft.)	Units
Villas	814–1360	226
2 BHK	739–1287	699
3 BHK	1268–1551	93
Plot	133-300	331

G+1, G+2,
G+6, G+9
Floors

1349
Units

56.31 Acres
(Approx)

Land Area

Clubhouse, Party Lawn,
Jogging, Senior Citizen Area,
Kids' Play, Amphitheatre,
Multipurpose Hall,
Reading Room, Sand Pit,
Power Backup

Amenities

Green Acres,
Neemrana



GREEN ACRES THE VILLAS

Configuration	Size (BUA in Sq.Ft.)	Units
Villas	1550-1950	226



GREEN ACRES GULMOHAR

Configuration	Size (BUA in Sq.Ft.)	Units
2 BHK	1119-1140	18
3 BHK	1531-1619	18



GREEN ACRES MARIGOLD

Configuration	Size (BUA in Sq.Ft.)	Units
2 BHK	850.14	141
3 BHK	1268.81	63



GREEN ACRES TULIP

Configuration	Size (BUA in Sq.Ft.)	Units
2 BHK (TYPE-1)	739	112
2 BHK (TYPE-2)	840	



GREEN ACRES GULMOHAR ELITE

Configuration	Size (BUA in Sq.Ft.)	Units
2 BHK	1170	12
3 BHK	1450	12



GREEN ACRES THE PALM

Configuration	Size (BUA in Sq.Ft.)	Units
2 BHK	1029	156



GREEN ACRES LAVENDER

Configuration	Size (BUA in Sq.Ft.)	Units
2 BHK	865	260



GREEN ACRES PLOTS

Configuration	Size (Sq. Yrd.)	Units
Plot	133-300	331

BUILT & DELIVERED

Ananta Jagat (Phase-I), Bhiwadi

Completed in 2017





Ananta Jagat (Phase-I) in Bhiwadi is a high-rise residential project that reflects the Group's vision for modern urban living.

With its well-designed apartments, contemporary amenities, and strategic location, the project offers a comfortable and connected lifestyle in the heart of Bhiwadi's growing real estate landscape.

BUILT UP AREA - 4,15,000 SQ.FT.

Configuration	Size (BUA in Sq.Ft.)	Units
2 BHK	935-1034	216
3 BHK	1271-1311	90

G+14
Floors

306
Units

7.84 Acres
(Approx)

Land Area

Modern Clubhouse

Kids play area

Amenities

Ananta Jagat
(Phase-I),
Bhiwadi

IN THE MAKING

Ananta Jagat Villa,
Bhiwadi
Completed in 2025





Ananta Jagat Villa is a low-rise residential development by the Group in Bhiwadi, offering independent villas within a gated township. Designed for spacious living with a sense of privacy, it brings together comfort, security, and a serene environment in a fast-growing industrial hub.

BUILT UP AREA - 1,30,000 SQ.FT.

Configuration	Size (BUA in Sq.Ft.)	Units
4 BHK	2742.54-4623	40

G+1
Floors

40
Units

7.84 Acres
(Approx)

Land Area

Modern Clubhouse

Kids play area

Amenities

Ananta Jagat
Villa, Bhiwadi

LIFE AT OUR PROJECTS



Ananta Jagat Villa



MAINTAINANCE



SECURITY



ELECTRICIAN



HOUSEKEEPING



HORTICULTURE



POOL MAINTENANCE



STP

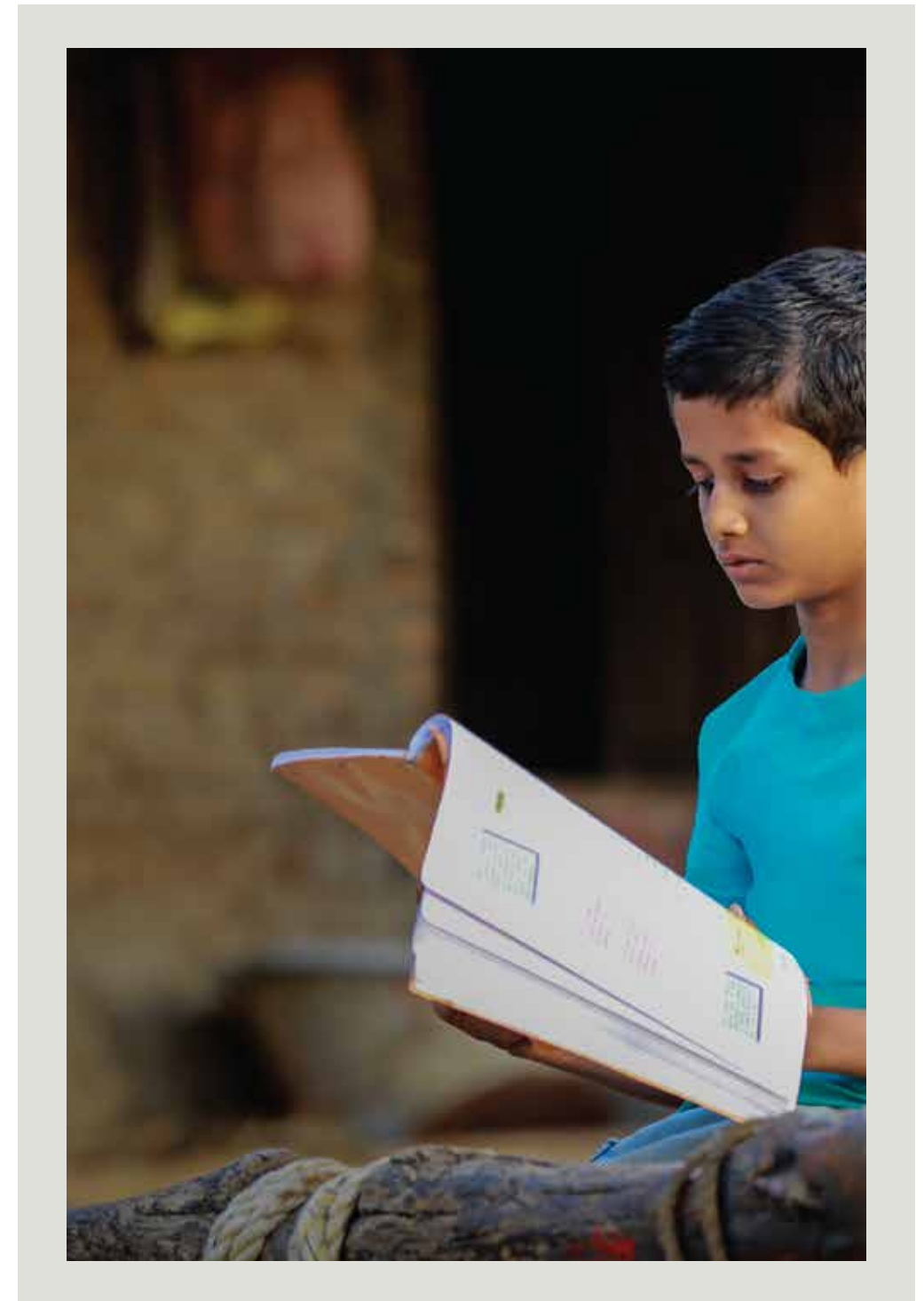
MAINTAINANCE

Redefining Real Estate with Responsibility.

Corporate Social Responsibility

At Group's project our responsibility doesn't end with handing over a home— it begins there. We believe in uplifting not just individuals, but entire communities. From empowering women through mandatory co-ownership to enhancing lifestyle in small towns with global retail tie-ups, every initiative we undertake is rooted in long-term social impact.

Our projects in tier-2 and tier-3 cities are designed to improve access to quality living, education, and employment. We promote inclusive ownership, support local economies through job creation and ensure that our developments nurture a sense of safety, pride and belonging. For us, corporate social responsibility isn't a checkbox — it's the foundation we build everything on.



In 2014, at Green Acres, Neemrana, Group, in collaboration with Bhagwan Mahaveer Viklang Sahayata Samiti, organized a special camp providing tri-cycles, calipers, Jaipur Foot, and hearing aids—benefitting around 250 differently abled individuals.

As part of its green initiative, Group conducted large-scale plantation drives across Neemrana, Behror, and Jaipur in 2022, contributing to a cleaner, more sustainable environment.

In 2021, Group adopted a cemetery in Behror, taking responsibility for its maintenance and restoration—an effort rooted in respect for shared community spaces.

To promote girls' education in rural areas, Group donated a Tata Magic vehicle in 2016 to Rajkiya Uchh Madhyamik Vidhyalaya in Jat Behror, enabling safer and more accessible school commutes for young female students.

During 2019–2020, Group, in association with the Construction Skill Development Council of India, organized training sessions in Jaipur to upskill on-site labourers—enhancing their productivity, safety and job readiness.

Amid the 2020 COVID-19 crisis, Group arranged for around 390 oxygen cylinders in Neemrana, offering vital medical aid when it was needed most.

Reaffirming its inclusive values, Group hosted another camp for the specially abled at Green Acres, Neemrana, in partnership with Jaipur Foot, extending mobility support through prosthetics, calipers and hearing aids.



A Journey Recognized. A Promise Rewarded.

Over the years, The Group has been honored with recognitions that reaffirm our values of trust, quality, affordability, and social commitment.

These accolades are not just milestones - they are reflections of the faith that families, partners and institutions have placed in us.



Awards & Accolades

2016

CSR Initiative of the year
by a Real Estate Sector
ABP News

2021

UPVAN – The Garden City @
Behror (Best Affordable
Project in Rajasthan)
PMAY Awards 2021 (Award of Merit)

2025

Project Rainbow
@ Jaipur (Best Affordable
Project in Rajasthan)
PMAY Awards 2025 (Award of Participation)

2025

UPVAN – The Garden City @
Behror (Best Affordable
Project in Rajasthan)
PMAY Awards 2025 (Award of Merit)

2025

The World Street @ Jaipur
Excellence in Landmark
Development Project
(Commercial)
Dainik Bhaskar



(Value Housing Initiative of Ashadeep Group)

Corporate Address: 5A/5D, Corporate Tower A-2,
Near Jawahar Circle, JLN Marg, Jaipur, Rajasthan-302017

+91 93093 71000

www.ashadeepgroup.com